



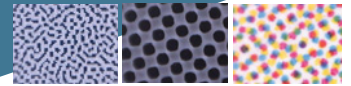
see the dots . . .

# LithoCAM II

**Troika**  
TROIKA SYSTEMS LIMITED

Utilising the latest technology, Troika's LithoCAM II offers affordable quality control in the prepress and print stages of the printing process.

Troika Dot Meters



## What is LithoCAM II?

Troika's LithoCAM II is the most advanced, accurate, and easy-to-use dot analyser on the market to measure films, plates (Metal & Polyester) and printed copy.

LithoCAM II is an ideal quality control tool for printed copy, identifying slur issues, ink/water imbalances and print doubling, thereby saving hours of time in the pressroom; and for plates identifying processor problems, plate coating and handling issues, and laser problems; these are all areas where LithoCAM users benefit by quickly identifying problems, and therefore saving time and cost.

LithoCAM II main features are accurate reading analysis including highlight and shadow detail, viewing images in high resolution, storing, printing or emailing images for further analysis or future reference.

## Key benefits

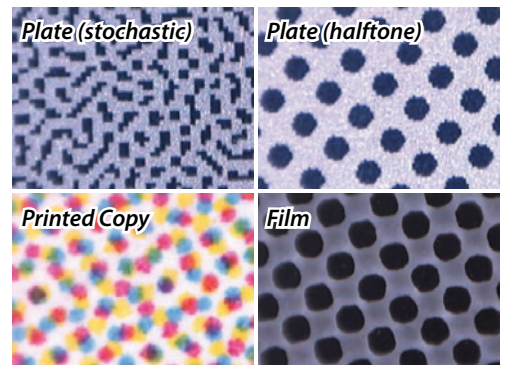
- ▶ Designed to work with all litho media.
- ▶ Fast and easy to use - simply press a button to get a reading.
- ▶ Accuracy  $\pm 0.5\%$ .
- ▶ Halftone dot measurement: 100 – 300 lpi ( 40 – 118 lpcm ).
- ▶ Stochastic dot from 10 microns.
- ▶ Measuring time less than 1 sec.
- ▶ Process and spot colour analysis.
- ▶ Screen angle and ruling calculator.
- ▶ Direct RIP interface.
- ▶ Saves the image for archiving or e-mailing for further analysis.

## Description

LithoCAM II is an essential part of any CtP or imagesetter installation and a must for print quality checks.

The LithoCAM II application is PC based and therefore able to process more data resulting in increased accuracy and functionality.

Powerful software measures dot percentages automatically in less than 1 second and offers a full complement of measuring tools: Image Micrometer; Screen Ruling Calculator, Screen Angle Analyser. Images and data can be printed and the readings imported directly into the users host RIP to calibrate the plate/film imagesetter.



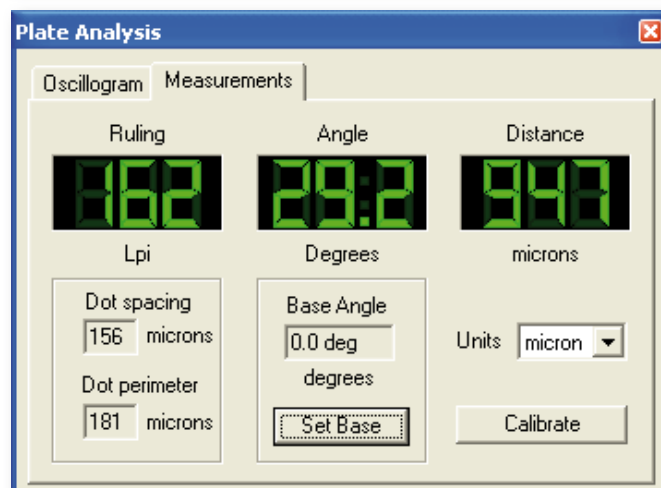
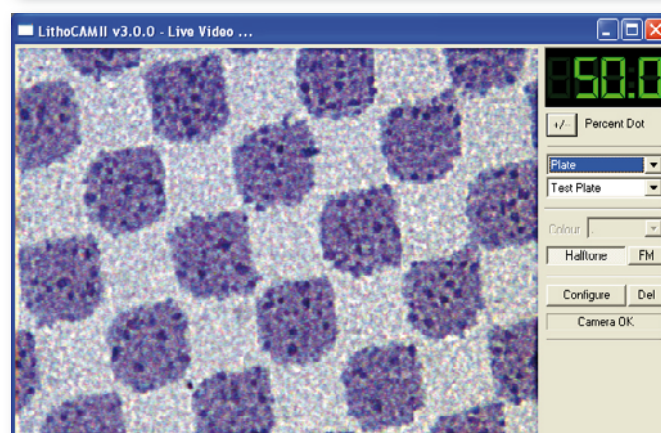
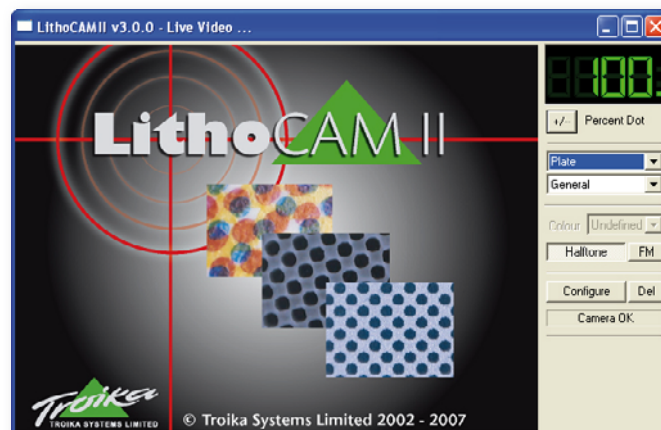
### Product Specifications

Features	LithoCAM II
<b>▼ Media</b>	
Film	✓
Offset Plates (Metal & Polyester)	✓
Printed copy (visual perception readings)	✓
<b>▼ Dot Evaluation</b>	
Halftone dots: 100 lpi - 300 lpi	✓
Stochastic dots (FM) from 10 micron	✓
Accuracy $\pm 0.5\%$ over full range of readings (10-micron accuracy $\pm 1\%$ )	✓
Plate analysis	✓
Measuring time: < 1 second	✓
Geometric measurements	✓
Dot gain calculation (mechanical)	✓
<b>▼ Interface</b>	
Numeric %-display	✓
Dynamic graphic display	✓
Screen angle / ruling calculation	✓
High speed USB 2.0 link	✓
Positive / Negative reading	✓
<b>▼ Optical Range</b>	
Field of view approx. 0.85 x 0.60 mm	✓
640 x 480 Pixel RGB 24-Bit Colour-CCD	✓
<b>▼ Connectivity &amp; Storage</b>	
JPEG, BMP or LCP file formats	✓
Direct application interface (RIPs, spreadsheets, etc)	✓
<b>▼ Light Source</b>	
White light LED	✓
Powered from PC – no batteries needed	✓

#### Minimum PC-Requirements

Pentium IV, 1 GHz, 256 MB RAM, 1024 x 768, 24-bit Display, USB 2.0, 1+ GB hard drive

(Specification subject to change without notice)



**Operating Systems:** Windows 2000, Windows XP

**Warranty:** 12 months return to base on hardware.  
12 months software updates FOC from website.



1 & 2 Blackworth Court  
Blackworth Industrial Estate  
Highworth, Wiltshire, SN6 7NS  
United Kingdom

Tel: +44 (0) 1793-766-355  
Fax: +44 (0) 1793-766-356  
info@troika-systems.com  
www.troika-systems.com

Your authorised LithoCAM II dealer: